

# ALCOTT CENTER

FOR MENTAL HEALTH SERVICES

---

**ANNUAL REPORT 2022**



# FROM THE CEO'S OFFICE

Happy New Year!

Over the course of 2022, through enhanced and new funding, the Alcott Center was fortunate to continue its expansion efforts, serving more than 1,500 individuals agency wide. This growth has been fueled by a sobering need for Alcott's services for those impacted by mental health and housing challenges.

During this time, we added on-site mental health and substance use treatments, serving those residing in our bridge homes. We also expanded to establish a robust Enhanced Care Management program that provides supplemental services to those with broad, complex health needs. And we have furthered Alcott's reach to provide on-site mental health services in South Los Angeles to those recently housed.

May your new year be healthy & prosperous.

*Nick Maiorino*

**NICK MAIORINO**

Chief Executive Officer



Mark

Mark began his journey with the Alcott Center at one of our bridge housing sites for community members navigating mental health challenges and justice-involved re-entry. After successfully completing programming at the bridge homes, Mark worked diligently with his case manager to find permanent housing for the first time in almost a decade. Mark now attends our studio art classes every week and has been able to stabilize both his mental health and housing.

# PURPOSE & PROGRAMS

---

*The mission of the Alcott Center is to enhance the quality of life and empower individuals faced with mental health and housing challenges as they transition toward wellness.*

## Programs

### Mental Health & Housing

#### Mental Health

Outpatient individual & group therapy, psychiatry, case management and preventative services for adult community members without insurance or who are Medi-Cal beneficiaries

#### Supportive Housing

Intensive case management, housing navigation, and permanent housing services for community members navigating housing & mental health challenges

#### Justice Involved Reentry

Transitional bridge housing, including mental health, nursing, life skills and substance use services, for community members navigating reentry and case management for individuals navigating justice-involved reentry & mental health challenges

#### Community

Studio art classes open to the community to reduce the stigma around mental health challenges and Pico Robertson Health Neighborhood to support the overall health of the community  
our mental health center is based in



We are incredibly grateful to continue to expand our art programming. In partnership with incredible volunteers and the Department of Public Health, the Alcott Center has been able to provide weekly art classes offered to the whole community in order to help reduce stigma around mental health challenges. Check out the artist store on our website to purchase art from some of our participants!



# ALCOTT AMBASSADORS

---

## Board of Directors

### David Sall, Chair

Deputy Director/COO, Conservation Corps of LB

### Clayton Coleman, Treasurer

Regional Manager, Union Bank

### Lee Milman, Secretary

Retired - A Community of Friends

### Nesli Akkol

Advancement & Institutional Relations , AFI

### Dezetta Burnett

Licensed Clinical Social Worker

### Joely Fisher

Actor, Singer, Activist

### Kymerly Garrett MBA GPHR

Managing Principal, Garrett Spioni Group, LLC

### Antonio Goodwin

Financial Advisor, Gabler, Nino & Associates

### Anya Ostry

Senior Vice President, CBRE

### Courtney Procel

Licensed Clinical Social Worker



The Alcott Center has worked with more volunteer groups this year than ever to put together welcome home baskets, organize the in-kind donation closet, and build community gardens. The work being done at the Alcott Center would not be possible without the generous support of volunteers.

# WHAT'S NEW?

As we look ahead, with the facility soon transferring ownership, we will sadly be saying goodbye to our Project Home Key (PHK) site in Commerce. The lessons learned opening the first PHK in Los Angeles County, where Alcott piloted 'trauma-informed' property management services, have been invaluable. A big thank you to our Commerce staff, tenants, and partners for making this program a huge success.

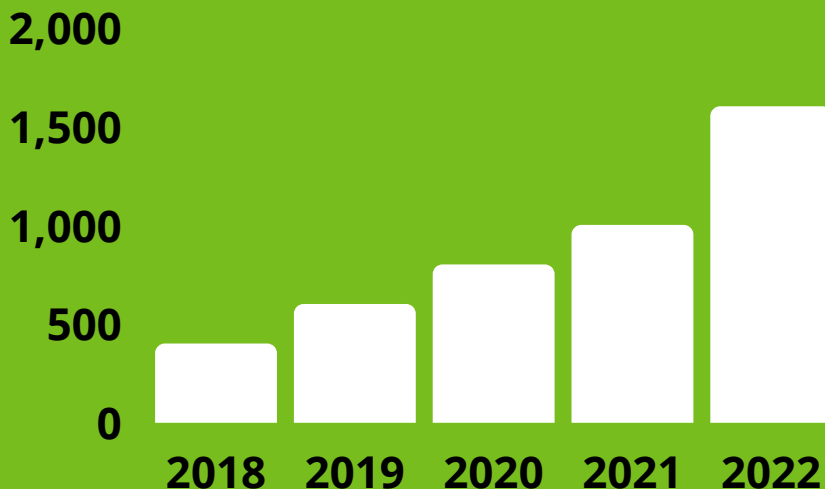
With new funding being made available for responding to community mental health crises, we are pleased to announce a new partnership with LA City. Through this partnership Alcott will soon launch an Unarmed Crisis Response program serving the West Los Angeles area.

Lastly, we are amid a strategic planning process, to help determine Alcott's roadmap for the next 3-5 years. We look forward to sharing this with you soon!



Over 93% of community members who are navigating justice-involved re-entry have not returned to incarceration because of the wrap-around services the Alcott Center for Mental Health Services continues to provide.

## Clients Served





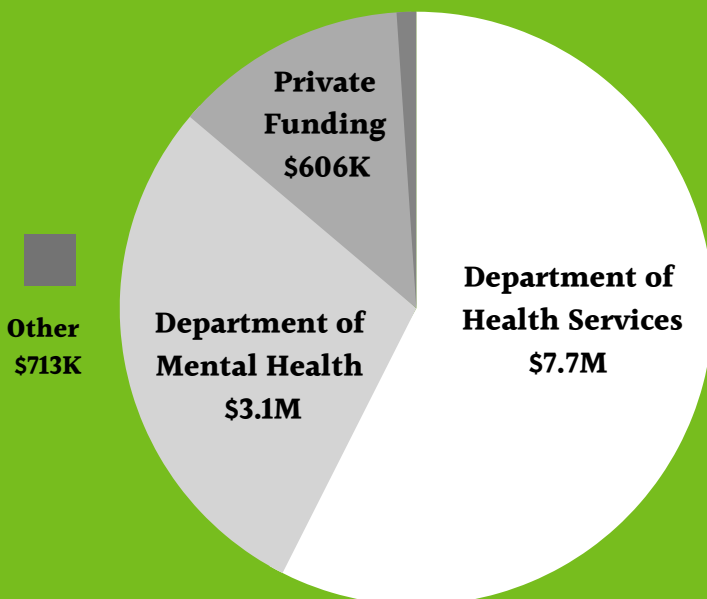
# FINANCIALS

The Alcott Center continued to experience a period of rapid growth during the fiscal year ended June 30, 2022. This marked the fifth year in a trajectory that has led the organization to expand to over four times the size it was five years ago. The organization has increased services through its relationship with the Department of Health Services and has worked to grow private revenue sources as well. Throughout this period of rapid growth, the organization has continued to control expenses, with nearly 90 cents of every dollar spent benefitting its clients through its program services. The organization continues to look for opportunities to provide enhanced support to its clients while expanding further in a sustainable and financially prudent manner. Revenue for this year was inflated due to in-kind donations and investment income from the trust donated last fiscal year.

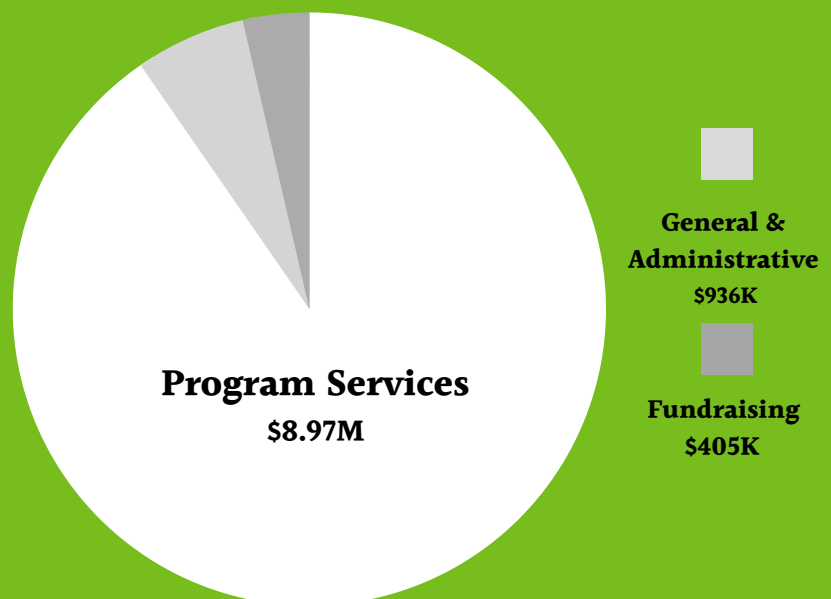


We would love to share the success story of Roque who has been a resident at Bandera for the last several months. His time at Bandera has helped him to focus on ways to meet his personal goals and expand his ways of practicing self care.

## REVENUE- \$12.1M



## EXPENSES- \$10.3M



**90% of every dollar donated goes directly to supporting clients**

# DEDICATED DONORS

## \$10,000+



**RHONDA MEISTER  
MEMORIAL TRUST  
ANYA OSTRY  
RUPI SINGH  
CLAYTON COLEMAN**



GEORGE HOAG FAMILY FOUNDATION



## \$5,000-\$9,999

**PENNY MEHRA  
JUDITH MILLMAN  
THOMAS PRITCHARD  
ESQUIRE  
EZULVINI  
NICHOLAS & MARGUERITE LEGACY FUND**

## \$1,000-4,999

**RAFE PERRY  
ANDREA TAN  
BRENDA JACOBS  
DAVIS SALL  
GHJ FOUNDATION**

**JOHN & MARIE ORBAN  
DOROTHY BERNDT  
SIKAND FOUNDATION  
STEVE TYLER**

**GENA MURRAY  
RICHARD & DEBRA SOLL  
NICK MAIORINO  
EVERY TABLE**

**WHOLE FOODS  
SCHWAB CHARITABLE  
AMERIPRISE  
J. ELIZABETH PORTRAITURE  
KYMBERLY GARRETT**

## \$500-999

**WILLIAM & ALICE ROY  
ASHLEY MC GULLAM**

**JEFFREY MANSON  
EMILY BOST BAXTER**

**JOSEPH GROSSMAN  
BARBARA HOHLT  
JACKSON MARKET**

**JEFFREY MANSON  
COOKIES**

## \$100-499

**SARAH KIM  
ELEONORE A. MELINE  
TIMOTHY & CYNTHIA BAKER  
FRED AND GAIL ROLLMAN  
UNLIMITED POSSIBILITIES  
HOME DEPOT  
BRENNAN LINDNER  
SALT AND STRAW  
CHARLES & MARGART HEALY  
THEODORE HAJJAR  
DR. MARTIN GOODMAN  
STEPHEN NUSKIEWICZ  
SIX FLAGS  
YIP FITNESS**

**JEANETTE & MARK  
MOULTHROP  
CHRISTIN HANCOCK  
ROBIN KAY-WICKER  
SAUNDERS SISTERS  
OLUSHIWA GIWA  
AMETHYST LEWIS  
RYAN O' LEARY  
CHRISTOPHER LEE  
LACI  
SHIRLEY STAMEN  
MARGARET O'NEIL  
SKIRBALL**

**UCLA MEDICAL CENTER  
RUTH & RICHARD GOLDSTEIN  
YONAH SCHMEIDLER  
RENAISSANCE CHARITABLE  
GOOGLE  
SMART AND FINAL  
BLICKS  
LEONARD & AUDREY ASHER  
SHARI STONE  
MICHAEL A. GALES  
MYRA & EMMANUEL SCHEGLOFF  
CHRISTINE AND DANIEL HOLSCHNEIDER**

**CORA  
YOLANDA CAPONERA  
DAWN MCREYNOLDS  
SUNNY BAK  
MAC MCREYNOLDS.  
ERIN SMITH  
STEVE NICE  
JASMINE ZONNELVELD  
HAL BASTIAN  
BOOMTOWN BREWERY  
BEV  
LETS ROOM  
PASADENA PLAYHOUSE**

## <\$100

**SUZANNE WHITE  
JOAN VERNETTI  
JOHN & JEANNE MONAGHAN  
JASON CORLEY  
SISTER KATHRYN STEIN  
TYLER WISE  
PACIFIC PARK**

**ELEANOR C. WILLIAMS  
ROBERT & MICHELLE ASHLEY  
ANDREA & SHEMAN ZIEVE  
LARAINNE NEWMAN  
DONNY HIRSCH  
DANIELLE DAILEY  
JUDY CLAMAN-FANTASIA**

**NATALIE PAULEY  
LATE SUNDAY AFTERNOON  
JUDY POLLNER  
GRACE DAVIS  
FACEBOOK  
THE HUNTINGTON  
EMERALD ISLE**

**HOLLYWOOD WAX MUSEUM  
THE BROAD  
SALT AND STRAW  
EMERALD ISLE  
DRIVE WISE AUTO  
PICABOO  
BIG 5**

# HOW CAN YOU HELP?

---

With the support of our community and donors we have been able to expand and grow our services to the level it is today. We would like to express gratitude for everyone that has supported us. As we move forward into the New Year, we are anticipating a greater need for support in order to ensure the needs of our clients are taken care of. We would love to invite you to support the Alcott Center through:

- Volunteering
- Donating
- Attending our Fundraising Events
- Following us on Instagram and Facebook
- Make a Welcome Home Basket



@alcottcenter\_



www.alcottcenter.org



amcgullam@alcottcenter.org

## Join Our Founder's Matching Gift Campaign

**Through the generosity of Penny Mehra and Tom Pritchard donations will be matched dollar per dollar up to \$10,000.**

Gather your friends, family and coworkers to make Welcome Home baskets for community members who are getting housed, in many cases, for the first time in decades. Here is a team from Union Bank making Welcome Home baskets.

